

WARDS AFFECTED:

Aspley, Bilborough
and Leen Valley

**WEST AREA COMMITTEE
14 NOVEMBER 2007**

**REPORT OF THE DIRECTOR OF THE BUILDING SCHOOLS FOR THE FUTURE
PROGRAMME**

NOTTINGHAM UNIVERSITY SAMWORTH ACADEMY

1 SUMMARY

This report is to inform the West Area Committee of the design development of the new Academy on the current William Sharp school site.

2 RECOMMENDATION

It is recommended that West Area Committee note this report as part of the process leading to deposition of a planning application with the City Council in mid-November.

3 BACKGROUND

- 3.1 The Academy will be situated on the site immediately adjacent to the Bilborough Sixth Form College and, with local primary provision, will form part of the Bilborough Learning Park. This Academy will be one of four Academies in Nottingham, including the Djanogly Academy, and will act as a hub for curricular development in the West of the City. The Academy programme is closely integrated with the Building Schools for the Future programme which is proceeding well in the City.
- 3.2 The proposal has been developed by a working group comprising senior representatives of the Sponsors, the University of Nottingham and David Samworth (who is an experienced Academy Sponsor with other projects in the Academy programme), the Headteacher and Chair of Governors of William Sharp School, the City Council, the Strategic Health Authority and the Principals of Bilborough and Broxtowe Colleges.
- 3.3 Health with Science will be the Academy specialisms. Quality and standards will be the guiding principles that will inform the way in which all those associated with the Academy will work.
- 3.4 The Children's Services Building Schools for the Future (BSF) Team has commissioned Atkins Ltd architects practice to develop designs of the Academy, working with the two sponsors Nottingham University and David Samworth. It is intended to take the designs up to Royal Institute of British Architects (RIBA) Stage D (detail design stage) and then novate the designs for the preferred bidder in the BSF process to prepare construction drawings (RIBA stages E to H), up to the BSF financial close and formation of the Local Education Partnership (LEP in April 2008).

- 3.5 The BSF Team have been working closely with the Sponsors and the existing William Sharp school to ensure that the principles established in the Council's Building Schools for the Future programme in producing building designs that enable transformational learning also embodied in the Academy.
- 3.6 Consultations with pupils, staff and the local community took place on 11 October 2007.

4 PROPOSALS

A new 950 place 11-18 Academy with specialisms of Science and Health.

- Appendices show site context aerial views, plans, sections and typical elevations.

- **SITE CONTEXT**

The Academy is located on the existing William Sharp school site and is immediately adjacent the Bilborough 6th Form College. The Academy building is positioned to minimize disruption to staff and pupils during the construction process. It is the Sponsors intention to develop good links with the 6th Form College. As part of this process is the decision to share usage of both sites, in terms of grass playing field and also with all-weather games provision. To this end it is proposed to move most of the all-weather games courts to the north of the Academy on the College site.

- **ACCESSIBLE BY THE COMMUNITY**

Currently there is very little engagement of the community with the existing School. The current site is fenced with an intercom on the school gates. The design of the Academy is therefore focused on engaging the community, with creating a public plaza leading directly to the main entrance. Key areas e.g. dining, catering and Learning Resource Centre and theatre/lecture room being immediately accessed from the main entrance. The rest of the accommodation is planned to be accessible in discreet layers as the 'extended schools' agenda is embodied.

- **LOW CARBON AND SUSTAINABILITY**

The Academy is being funded by Partnership for Schools (PfS) with a funding model that matches the Nottingham BSF reference schemes. A further £500,000 has been given to the Academy to be ring-fenced specifically for reducing the carbon footprint.

- **DESIGNS THAT ENABLE TRANSFORMATIONAL LEARNING**

With experience of the Nottingham BSF schools design development, the BSF Team has ensured that principles of design of the Academy will not hinder transformational learning in the Academy. The creation of multi-use spaces, and classrooms that have potential for being joined together etc are embodied in the design. As in BSF, Information Communication Technology (ICT) will be embodied in the Academy. All teaching areas will have hard wired as well as wireless IT provision, with further IT

provision being extended to non-teaching areas e.g. kitchen and also out into the site – cameras for wild life observation or playing fields for timing of sporting events.

5 TIMESCALE FOR IMPLEMENTATION

Current BSF programme:-

- Two bidders currently developing final proposals with reduction to one 'preferred bidder' in late December 2007
- Designs being developed to RIBA Stage D by Atkins Ltd with Faithful and Gould technical support to enable a) planning application deposition with the Council in mid November 2007, and novation to the preferred bidder in February 2008, for the preferred bidder to develop into construction drawings ahead of starting work on site.
- Main construction to start when financial close is reached with the City and the preferred bidder, and the LEP is formed in April 2008
- There is a need for an early works contract to be let in February 2008, to enable completion of the Academy building for September 2009.
- Completion of demolition of existing school and re-instatement of grounds etc will take place August 2009 – end of December 2009.

6 FINANCIAL IMPLICATIONS

None as the Academy is being funded by Partnership for Schools.

7 LEGAL IMPLICATIONS

None

8 EQUALITY AND DIVERSITY IMPLICATIONS

The opportunity to address equality and diversity issues in the immediate vicinity of the Academy site is a key agenda with the sponsors. The immediate area is considered to be a disadvantaged community. The sponsors' vision therefore addresses how the new Academy can be a 'regenerator' in the community to enable all local people to benefit from educational and vocational initiatives in the Academy.

9 RISK MANAGEMENT ISSUES

The Building Contract is in a form that results in a balance of the risks being apportioned between the City Council and the LEP that is satisfactory for the City Council and is acceptable to those bidding to form the LEP.

10 CONSULTATIONS

- 10.1 Initial engagement meetings held in May 2007, have been facilitated by the BSF team and Atkins architects and sponsors with pupils, staff and governors from the William Sharp School.

- 10.2 Design Quality Indicator (DQI) sessions were held in July 2007, facilitated by the BSF team and Commission for Architecture and the Built Environment (CABE) have been held with pupils, staff, governors and sponsors from the William Sharp School. DQI's are mandatory for school designs being procured under the BSF programme.
- 10.3 Consultation meetings were held on 11 October 2007, facilitated by the BSF team and Atkins architects with:-
- Pupils
 - Staff and governors from the William Sharp School,
 - Academy Stakeholder Reference Group, and
 - The community

11 CRIME AND DISORDER ACT IMPLICATIONS

None.

12 VALUE FOR MONEY

The designs are being procured in accordance with the Nottingham BSF model for reference schemes, in terms of agreed funding model, with designs being robust and sustainable, and considering whole life-cycle costs

13 LIST OF BACKGROUND PAPERS OTHER THAN PUBLISHED WORKS OR THOSE DISCLOSING CONFIDENTIAL OR EXEMPT INFORMATION

None.

14 PUBLISHED DOCUMENTS REFERRED TO IN COMPILING THIS REPORT

None

25 October 2007

**JIM MASON
BSF DIRECTOR
Children's Services
Sandfield Centre Suite E
Sandfield Road,
Lenton
Nottingham
NG7 1QH**

Contact Officer: Peter Hemphill, BSF Design Manager
Tel: 0115 915 0652
Mobile: 07071 571341
Email: peter.hemphill@nottinghamcity.gov.uk

Proposed Site Plan

30.10.07



Site Perspective In Context

30.10.07



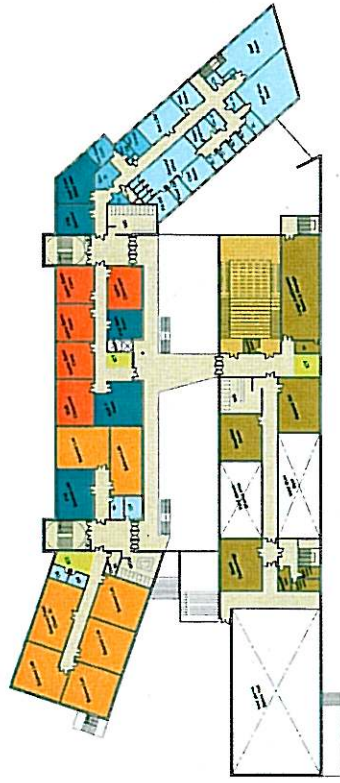
Nottingham University
Samworth Academy

ATKINS

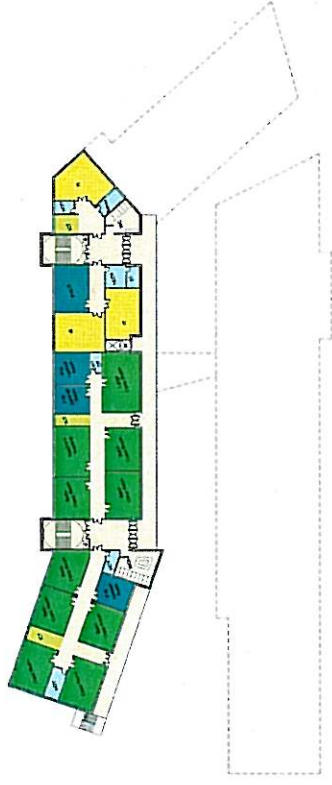
Proposed Floor Plans

30.10.07

First Floor Plan
Scale 1:500



Second Floor Plan
Scale 1:500

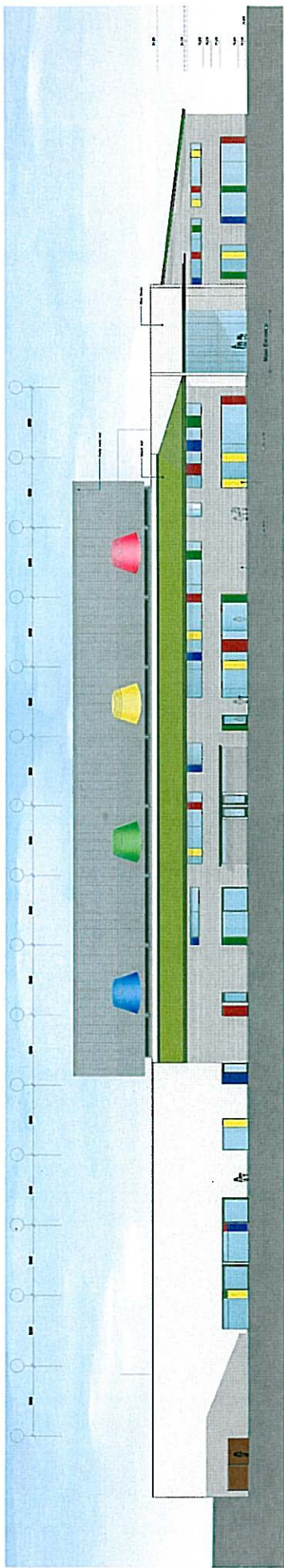


- Library
- Class
- Office
- Open Access Area
- Other
- Prop. Access Area

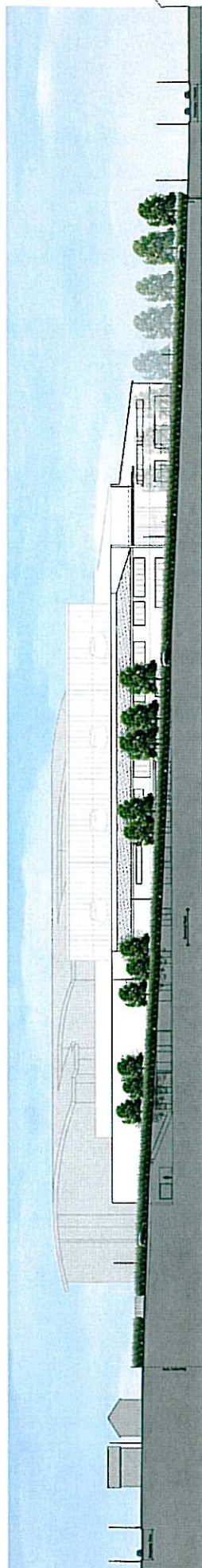


Elevations

30.10.07

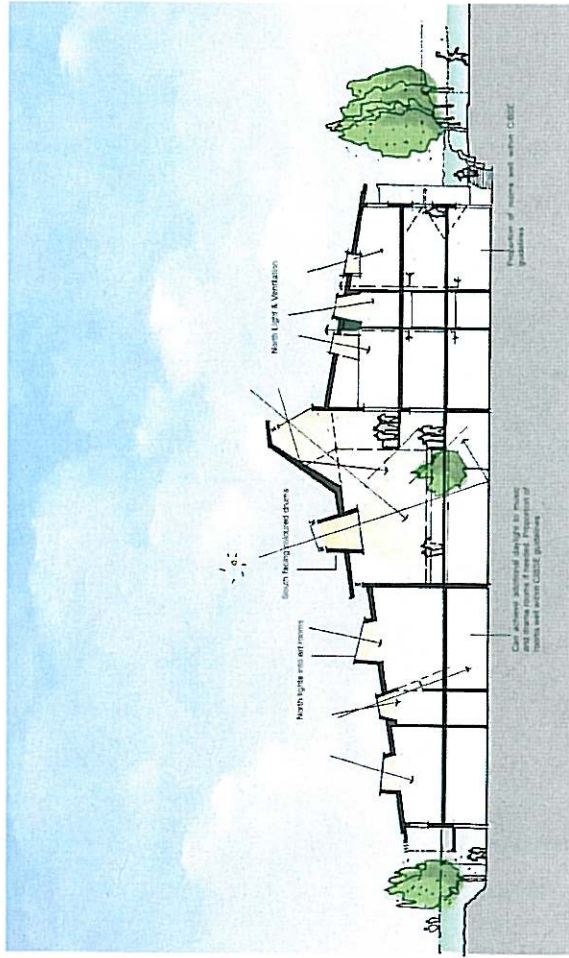


Front Elevation



Front Elevation and Context

Section with access balconies and 3m corridors



Section with no access balconies and 2m wider corridor zones = 5 m o/a

